



Type X, 5/8" sound damping gypsum panel without paper or metal in the core. Cuts and installs similar to regular gypsum panel products. QuietRock® ES is the professional's choice for acoustic walls in residential and commercial applications.

Product Specifications:

- Thickness:** 5/8" (15.9mm), tapered edges
- Width:** 4' (1220mm)
- Lengths:** 8' (2438mm), 9' (2743mm), 10' (3048mm)
- Weight:** 2.6 lbs/sqft
- STC-rated Assemblies (per ASTM E90):** 48-60
- Fire-rated (per ASTM E119, UL263):** 1 hour, Type X
- Flame Spread (per ASTM E84):** Class A
- Product Standards:** ASTM C1396
- Installation Standards:** ASTM C840; GA-214, GA-216

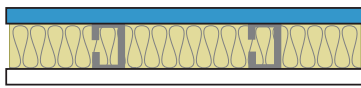
UL Assembly:  

Approved for use in many one and two hour fire-rated assemblies including U305, U309, U340, U341, U376, U386, U425, U465, V419, V463, V464, W313, W317, W459, and W460. Go to www.QuietRock.com for additional information on fire-rated assemblies. QuietRock® ES can be incorporated in several one and two-hour fire-rated UL designs. However, it is not intended as a direct substitute for a UL Classified Gypsum Board in all fire assemblies. Refer to the specific UL designs for assembly details.

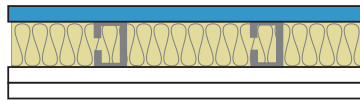
Common Wall Assemblies:

Light Gauge Steel Stud Walls

Single 3 5/8" Steel Stud Wall, 24" OC - **STC 55** Single 3 5/8" Steel Stud Wall, 24" OC - **STC 60**



QuietRock® on one side,
Type X on the other

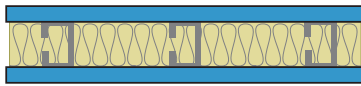


QuietRock® on one side,
2 layers 5/8" Type X on the other

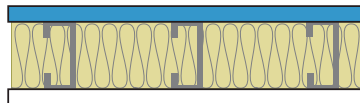
Visit www.QuietRock.com for additional assembly and technical information

Heavy Gauge Steel Stud Walls

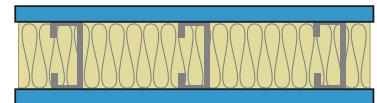
3-5/8" Single Steel Stud Wall, 16" OC - **STC 48** 6" Single Steel Stud Wall, 16" OC - **STC 49** 6" Single Steel Stud Wall, 16" OC - **STC 53**



QuietRock® on both sides



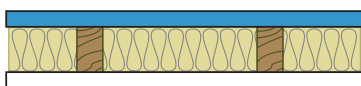
QuietRock® on one side,
Type X on the other



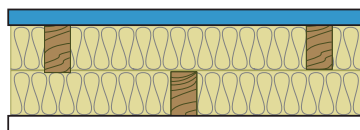
QuietRock® on both sides

Wood Stud Walls

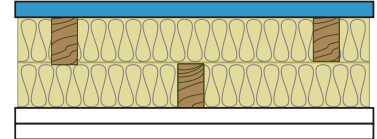
Single 2x4 wood studs, 24" OC - **STC 51** Staggered 2x4 wood studs, 8" OC - **STC 55** Staggered 2x4 wood studs, 8" OC - **STC 60**



QuietRock® on one side,
Type X on the other



QuietRock® on one side
Type X on the other



QuietRock® on one side
2 layers 5/8" Type X on the other

The information contained in this document is for general purposes only. Features and specifications are subject to change. The diagrams and stated STC ratings are intended to serve as a guide. Construction practices have an influence on final STC ratings. PABCO® Gypsum cannot guarantee actual STC ratings. Flanking sound patterns, the integrity of the wall, and construction methods factor in effective sound control. Exposure to excessive or continuous moisture and extreme temperatures of 125°F (52°C) or more should be avoided. QuietRock® should be stored flat in a dry area, under cover, on supported risers to prevent damage to product. Proper care should be taken while transporting, storing, applying and maintaining QuietRock.